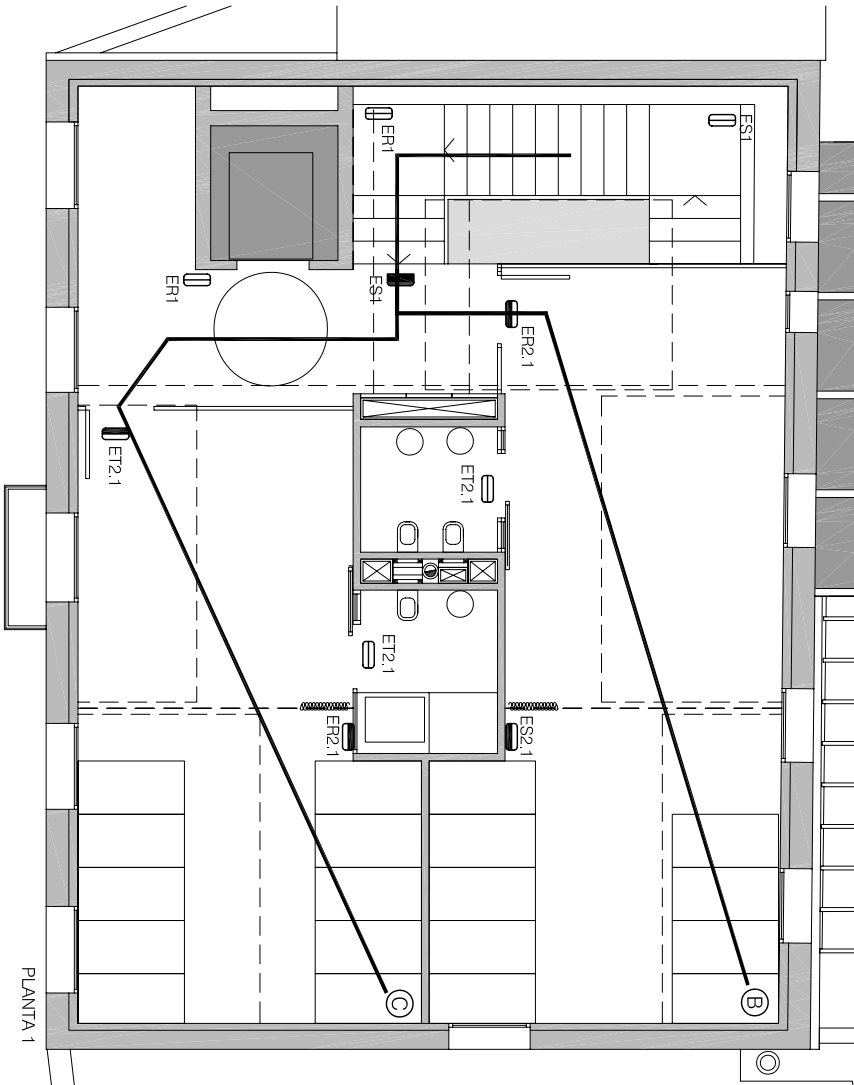












RECORRIDOS EVACUACION	
RECORRIDO	<35 m
B - SALIDA 1	= 28,90 m
C - SALIDA 1	= 30,60 m
E - SALIDA 2	= 24,10 m
D - SALIDA 1	= 17,20 m





REC. ALTERNAT.	<25 m
B - PUNTO 1	= 22,46 m
C - PUNTO 1	= 24,17 m
E - PUNTO 2	= 11,81 m

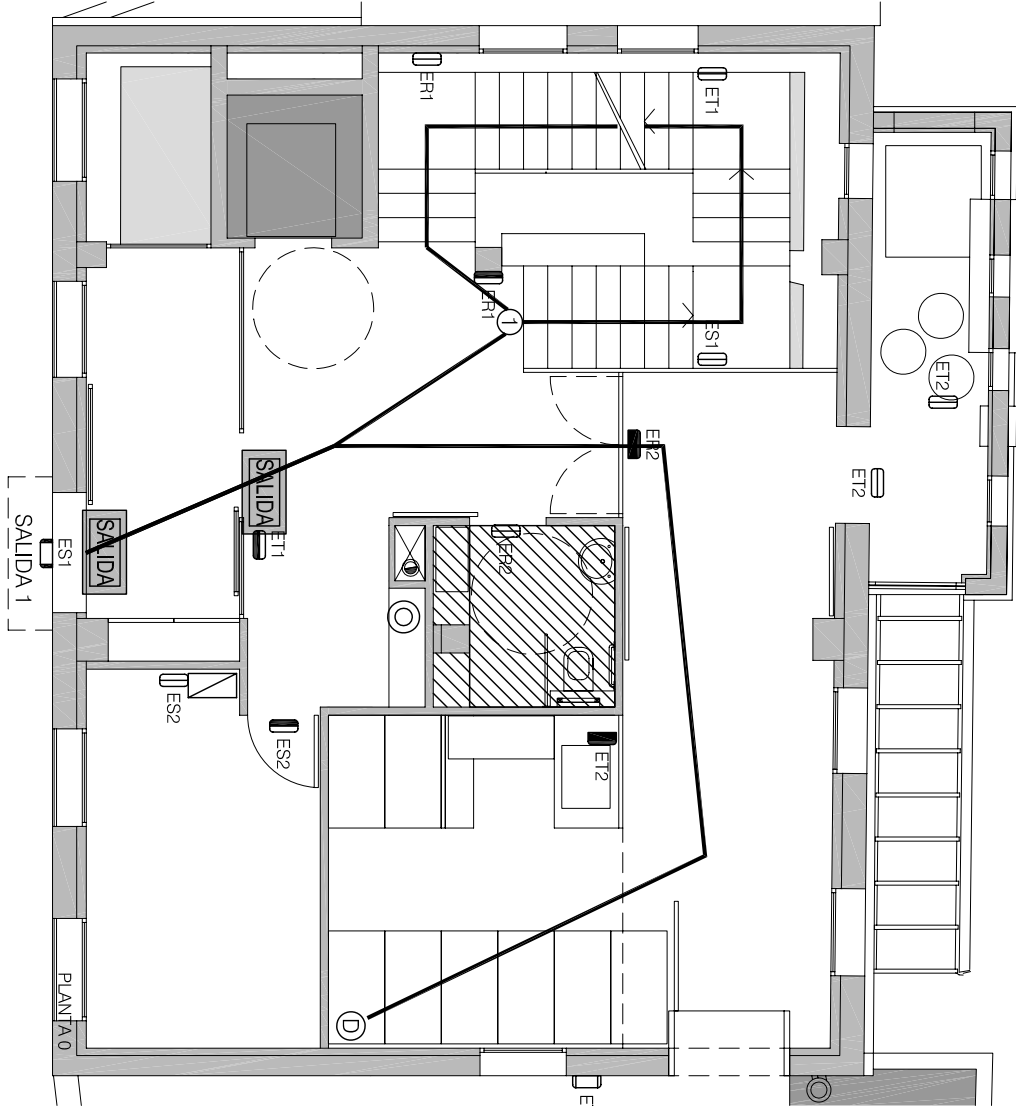


JUSTIFICACION CTE DB-SI

-  SALIDA: SEÑAL FOTOLUMINISCENTE INDICACION SALIDA (TIPO BANDEROLA)
-  SEÑAL FOTOLUMINISCENTE INDICACION DIRECCION EVACUACION
-  CENTRAL ALARMA
-  BLOQUE AUTONOMO EMERGENCIA 80 LUM/7h NORMALUX EXTRA PLANA F-80 O EQUIVALENTE
-  BLOQUE AUTONOMO EMERGENCIA 188 LUM/7h NORMALUX EXTRA PLANA F-200 O EQUIVALENTE
-  BLOQUE AUTONOMO EMERGENCIA 283 LUM/7h NORMALUX EXTRA PLANA F-300 O EQUIVALENTE
-  BLOQUE AUTONOMO EMERGENCIA 61 LUM/7h NORMALUX HERMETICO DE-80 O EQUIVALENTE
-  BLOQUE AUTONOMO EMERGENCIA 135 LUM/7h NORMALUX HERMETICO DE-150 O EQUIVALENTE
-  RECORRIDO DE EVACUACION HACIA UNA SALIDA
-  BOCA DE INCENDIO EQUIPADA (BIE)

JUSTIFICACION DE DB-SI

-  ITINERARIO HORIZONTAL ADAPTADO
-  SALIDA ADAPTADA
-  ITINERARIO VERTICAL ADAPTADO
-  ASEO ADAPTADO



PROXECTO BÁSICO E DE EXECUCIÓN DE ESCOLA INFANTIL CONCELLO DE VIGO

XERENCIA MUNICIPAL DE URBANISMO



P16

PLANO:

JUSTIFICACIÓN DB-SI

DATA: SETEMBRO 2011

SITUACION:

RÚA MESTRES GOLDAR Nº22, CONCELLO DE VIGO

ESCALA:
1/100

OBRAS E PROXECTOS MUNICIPAIS

delineacion: alfonso rodriguez

arquitectos municipais: Juan Luis Piñeiro Terradás David Carvajal Rodríguez-Cadafso